



Jasmine cottage

Carn Gwarval, St. Mary's

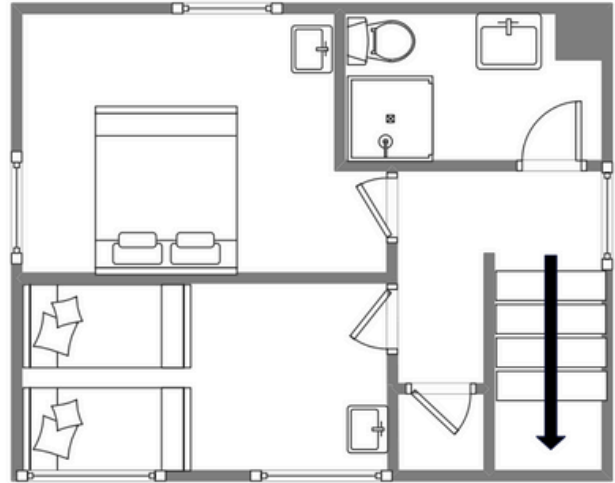
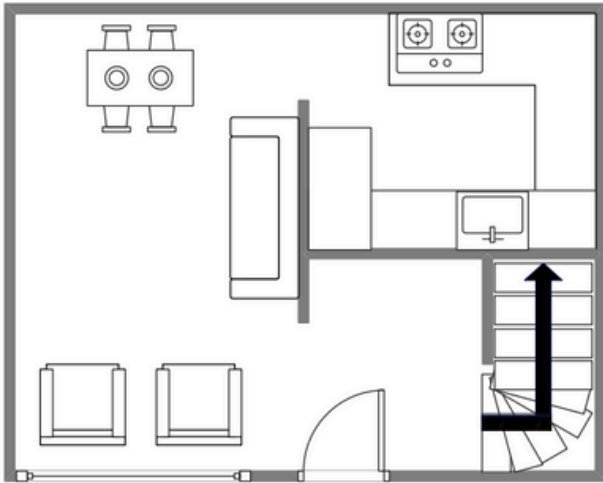


Sleeps 4 | Saturday Change over

- Double or twin arrangements
- Private garden
- Close to Hugh town and Old town
- Outside seating area
- Internet access
- Children welcome

Jasmine Cottage is an attractive 19th Century granite barn conversion, situated in its own sheltered garden. The accommodation consists of an open-plan lounge and kitchen, with stairs leading to a double bedroom, a twin bedroom and a bathroom. The amenities of Hugh Town are only a ten-minute walk away, and the beach and cafes at Old Town can be reached with similar ease by taking a leisurely stroll in the opposite direction. Jasmine Cottage offers peace and tranquility, and is also perfect for al fresco dining on warm summer nights.

Layout



Getting to the property

Map of St Marys



Directions from the Quay | Walking time: 15-20 minutes

Head towards the entrance to the quay
Turn left at The Mermaid Inn on to Hugh Street
Keep to the left side of the road
Continue along Hugh Street to Bordeaux shop
When you pass Bordeaux, cross to the Town Hall

Walk straight ahead on to Church Street
Follow the road past the church
Take first left on brow of the hill
After 50 yards, go through the gate to your left
Jasmine Cottage is at the end of the path

What3words: flat.duplicity.decorator